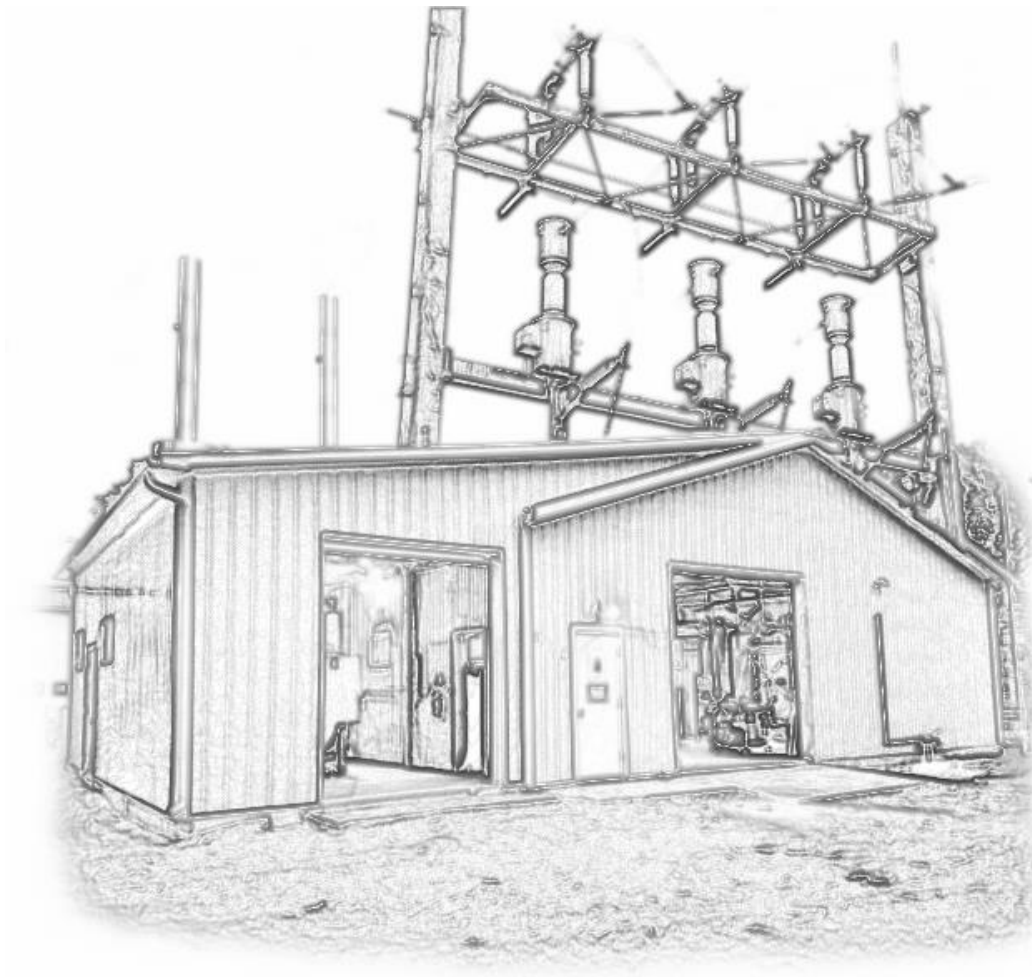


Panora Municipal Electric

# Explanation Of Electrical Rates and Fees



It is important to the Panora Electric Utility that you understand how rates and fees apply to your utility bill. Understanding not only how a fee is calculated and applied, but how it occurs will help you keep cost under control.

The electric utility provides a variety of information and online tools to help you understand and control your utility cost. By going to [www.cityofpanora.com](http://www.cityofpanora.com) and holding your pointer over the City Department tab then move down to Panora Municipal Electric, you will be able to select the information you are looking for.

### Kilowatt Details

CITY OF PANORA

102 N.W. 2ND ST. ~ P.O. BOX 98

PANORA, IOWA 50216

(641) 755-2164

www.cityofpanora.com

SERVE AT

DATE

102 NW 2nd Street

3/28/19

For Service From

2/15/19

3/15/19

CHARGES/CREDITS	DATE	METER READING		USAGE	AMOUNT
		PREVIOUS	PRESENT		
PREVIOUS BALANCE					.00
PREVIOUS PAYMENT					203.83
ELECTRIC		4379	5188	809	85.84
FUEL ADJUST					10.78

The first line on your electric bill is the kilowatt usage. Each month the utility reads your meter which is shown above as the present read. Last month's read or previous read is subtracted from the present read to calculate the kilowatts consumed for the month. The calculated number is displayed on your bill in the USAGE column.

The kilowatt usage is then multiplied times the current kilowatt rate. The kilowatt calculation is combined with a \$25-meter fee and displayed as the total kilowatt charge in the AMOUNT column.



**10 – 100 watt bulbs = 1000 watts or 1 kilowatt**

Let's look at a few more details about your kilowatt charges. As shown in the illustration, operating ten 100-watt bulbs would create an electric load of 1000 watt's, or 1 kilowatt. If this load continued for 5 hours your consumption would be 5 kilowatt hours for that day. Extending this daily load over a 30-day billing period would create a usage of 150 kilowatt hours for this one item.

## Kilowatt Details

When the example is calculated using an average rate of nine cents per kilowatt hour, the cost would be \$13.50 for the billing period. Keep in mind that some items in your home or business consume power at a much higher rate. These items could include large appliances, air conditioning, or electric heating equipment.



As mentioned previously there is a 25-dollar service fee included in your total usage cost. This fee helps with the cost of maintaining power to your home or business. Not only does the utility maintain the service line and meter on your property. But also, miles of aerial and underground distribution lines, transformers, distribution equipment, hardware, and customer service 24 hours a day 7 days a week. As you can see there is a lot more cost to keeping the lights on than just reading the meter.

## Fuel Adjust Details

CITY OF PANORA				
102 N.W. 2ND ST. ~ P.O. BOX 98				
PANORA, IOWA 50216				
(641) 755-2164		www.cityofpanora.com		
SERVE AT		DATE		
102 NW 2nd Street		3/28/19		
For Service From		2/15/19	3/15/19	
CHARGES/CREDITS	DATE	METER READING		USAGE
		PREVIOUS	PRESENT	
PREVIOUS BALANCE				.00
PREVIOUS PAYMENT				203.83
ELECTRIC		4379	5188	809
Fuel Adjust				10.78

The next line on your utility bill is the Fuel Adjust fee. This charge helps offset the cost of the utilities power provider delivery fee. Each month

CIPCO charges the utility a delivery fee called Seasonal Demand. This fee covers the providers transmission and equipment maintenance fee, much the same as the utility's maintenance fee. The delivery cost is a rolling average based on the utilities usage and can vary from month to month. Your utility works hard to make the system as efficient as possible and passes the resulting savings on to our customers.

Wholesale Power Invoice			
Calendar Month: November			
Town of Panora			
Seasonal kW:	<u>Gross kW</u>	<u>Heat Plus</u>	<u>Net kW</u>
Dec	1,969	213	1,756
Jan	2,193	263	1,930
Feb	1,831	272	1,559
Jun	2,861	0	2,861
Jul	3,064	0	3,064
Aug	2,801	0	2,801
			<u>13,971</u> 1/8th = 2,329 kW
Demand			
Seasonal Demand	2,329 kW	@	\$8.21
			<b>\$19,121.09</b>

Several years ago the electric utility changed from the tier level billing method to the more excepted fix rate. At that time the Fuel Adjust fee was determined by dividing an average of the years CIPCO seasonal charges by the number of kilowatts sold to our customers.

This rate varies slightly from month to month and can be directly affected by the utilities efficient use and delivery of power to our customers. This is why utility staff works hard to monitor power usage and improve the power delivery system.

## Heat Plus Details

CITY OF PANORA				
102 N.W. 2ND ST. ~ P.O. BOX 98				
PANORA, IOWA 50216				
For Service From 2/15/19 3/15/19				
CHARGES/CREDITS	DATE	METER READING		USAGE
		PREVIOUS	PRESENT	
PREVIOUS BALANCE				.00
PREVIOUS PAYMENT				203.83
ELECTRIC		4379	5188	809
FUEL ADJUST				10.78
<b>Electric</b>		<b>51430</b>	<b>52270</b>	<b>840</b>
<b>Fuel Adjust</b>				<b>48.11</b>
				<b>11.20</b>



Those customers who use electric heat for there home or business have a second meter on their utility bill. The usage recorded on this meter is charged at a lower rate during the winter months. There are two different methods used to connect this meter. Some meters are supplied independently of the main meter while others are connected after the main meter. The heat plus meter will be deducted from the main meter for those customers with subtract meters and the fuel adjust fee will be calculated on the reduced kilowatts.

**Kilowatt Usage**  
1000

**Deduct Duel Fuel**  
[Empty Box]

**Line Duel Fuel**  
1000

☒ Summer ☐ Winter

**Utility Supply**

Season Selected: Winter  
 Meter Service Fee: \$ 25  
 Kilowatt Cost: \$ 75.2  
 Delivery Cost: \$ 13.33  
 Duel Fuel Cost: \$ 53.7  
 Duel Fuel Delivery: \$ 13.33  
 Fuel Meter Fee: \$ 3.00

**Main** **Heating**

**Kilowatt Usage**  
2000

**Deduct Duel Fuel**  
1000

**Line Duel Fuel**  
[Empty Box]

☒ Summer ☐ Winter

**Utility Supply**

Season Selected: Winter  
 Meter Service Fee: \$ 25  
 Kilowatt Cost: \$ 75.2  
 Delivery Cost: \$ 13.33  
 Duel Fuel Cost: \$ 53.7  
 Duel Fuel Delivery: \$ 0  
 Fuel Meter Fee: \$ 3.00

**Main** **Heating**

The diagrams above depict the two methods of connecting heat plus meters and how the information would be entered in the calculator available from the right column menu.

## Electric Rate Table

Fixed meter service and distribution fee.	25.00
Fixed cost per kilowatt consumed, set by City Ordinance.	0.075200
Fuel Adjust or dilivery rate. Calculated per kilowatt	0.013330
Duel fuel or heat plus rate per kilowatt consumed.	0.053700
Duel fuel or heat plus delivery cost per kilowatt.	0.013330
Heat plus meter service maintenance fee.	3.00

Rates and billing methods are approved by the city council and can only be changed by further review and approval of the council. More information is available in chapter 111 of the city municipal code and can be viewed by clicking the button below.