

Sidewalk Inspection Guidelines



Figure (A)

Vertical Separation

Any area or square of sidewalk with a vertical separation of $\frac{3}{4}$ inch or more

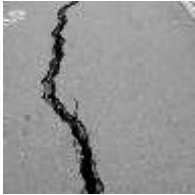


Figure (C)

Horizontal Separation

Any area or square of sidewalk with a horizontal separation of 1 inch or more



Figure (E)

Holes or Depressions

Holes or depressions equal to $\frac{3}{4}$ inch or more and at least 4 inches in dia.



Figure (G)

Spalling Over 50%

A single square of sidewalk with one or more depressions equal to $\frac{1}{2}$ inch or more.



Figure (I)

Spalling Over Less Than 50%

A single square of sidewalk with one or more depressions equal to $\frac{3}{4}$ inch or more



Figure (K)

Sidewalk Cracks

A single square of sidewalk cracked in such a manner that no one part thereof has a piece greater than one square foot or contains 3 or more cracks in a single 4 foot square

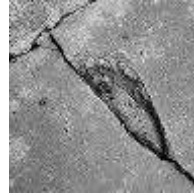


Figure (B)

Missing Sidewalk to Full Depth

Sidewalk with any part thereof missing and area to full depth



Figure (D)

Change in Grade

A change from the construction or design grade equal to or greater than three-fourths ($\frac{3}{4}$) inch per foot



Figure (F)

ADA Compliant Plate

ADA compliant plates must be installed in the last square or section of sidewalk adjoining a city street or alley way



Figure (H)

Sidewalk Width and Depth

Residential sidewalks shall be at least four (4) feet wide and four (4) inches thick and each section shall be no more than four (4) feet in length

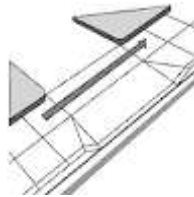


Figure (J)

Sidewalks Over Driveways

Sidewalks over driveway areas shall be no less than six (6) inches in depth