

Panora Municipal Electric



Providing the power to grow

Due to the necessary electrical upgrades coming in the near future, Panora Municipal Electric would like to recommend a small rate per KW increase.

Panora has not received a electrical rate increase since prior to 2002. During this time our demand rates, kilowatt rates and maintenance cost have increased significantly.

This steady increase in cost has caused our margins for operations and distribution maintenance to narrow, preventing the needed upgrades to our system.

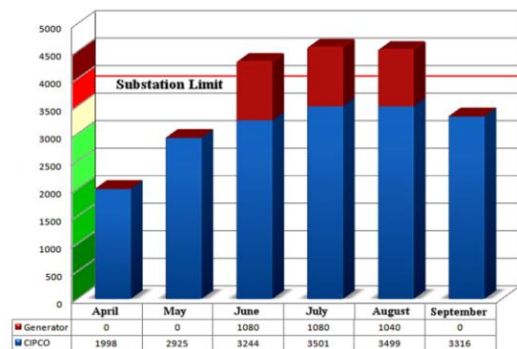
Electrical Rate Change

Over the past 5 years the electrical demand within the City of Panora has increased at a steady rate by either adding new transformers or increasing load on existing ones. We have simply outgrown our existing substation and distribution system.



During the peak load days of the past 2011 summer we needed to run the city generators to prevent brown outs or possible damage to our main transformer.

SUBSTATION SAFETY LIMITS



The electrical department is proposing a small rate increase of \$ 0.012 per KW to help offset the cost of upgrades and much needed equipment replacements.

Rate Increase Cost to Customers

Below are the electrical tier level rates and examples of what the increase cost will be to customers.

Panora Electric Rate Shedule

Sched	KW Cost	Increase	New Cost	Change
0-30 KW	0.144288	0.012	0.156288	7.68%
31-300 KW	0.100288	0.012	0.112288	10.69%
301-1000 KW	0.078288	0.012	0.090288	13.29%
1000+ KW	0.083288	0.012	0.095288	12.59%
Average	0.101538	0.012	0.113538	11.06%

ELECTRIC UTILITY COST SAMPLES

KW USAGE: 282

Schedule	Existing	New Rate	Increase
0-30 KW	\$4.33	\$4.69	\$0.36
31-100 KW	\$7.02	\$7.86	\$0.84
101-600 KW	\$14.24	\$16.43	\$2.19
601+ KW	\$0.00	\$0.00	\$0.00
Total Cost	\$25.59	\$28.98	\$3.39

KW USAGE: 794

Schedule	Existing	New Rate	Increase
0-30 KW	\$4.33	\$4.69	\$0.36
31-100 KW	\$7.02	\$7.86	\$0.84
101-600 KW	\$39.14	\$45.14	\$6.00
601+ KW	\$16.16	\$18.48	\$2.32
Total Cost	\$66.65	\$76.17	\$9.52

KW USAGE: 1150

Schedule	Existing	New Rate	Increase
0-30 KW	\$4.33	\$4.69	\$0.36
31-100 KW	\$7.02	\$7.86	\$0.84
101-600 KW	\$39.14	\$45.14	\$6.00
601+ KW	\$45.81	\$52.41	\$6.60
Total Cost	\$96.30	\$110.10	\$13.80